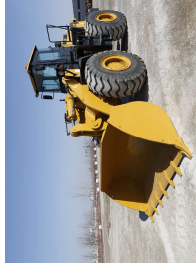
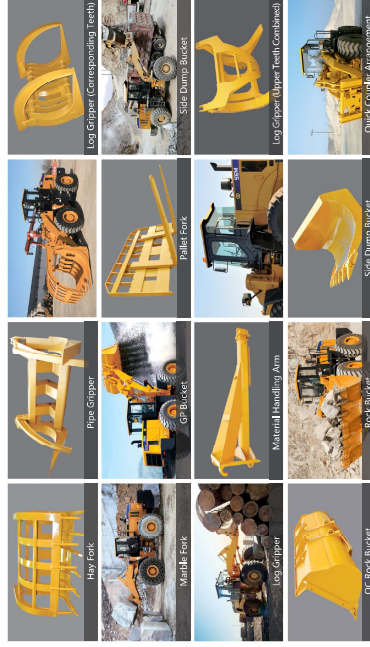


Machine Applications

- The sturdy design of the 655D makes it the perfect machine for large volume earthmoving applications
- In Hopper feeding and Coal loading applications the 655D can load more, move faster and burn less fuel
- Multiple work tools are available for increased versatility



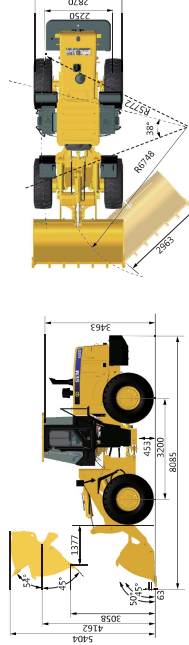
Work Tool Options



Main Specifications

Items	SEM655D	Items	SEM655D
Main Specifications		Engine	WeiChai WD10G
Rated Load	kg 5,000	Model	WD10G
Operating Weight with Standard Bucket	kg 16,800	Rated Power	kW 162
Bucket Capacity	m ³ 2.7-4.5	Rated Speed	r/min 2,000
Wheel Base	mm 3,200	Displacement	L 97.26
Overall Dimension	mm 8,052x 3,632 x 4,63	Implement Hydraulic	
Operating Specifications		Implement System Type	Two pump flow merging hydraulic system
Bucket Force	kN 168	Boom Base Time	s 5.13
Dump Clearance	mm 3858	Hydraulic Cycle Time	s 9.5
Articulation Angle	° 38±1	System Pressure Setting	Mpa 17
Transmission		Brake System	
Transmission Type	Countershaft, power shift	Service Brake	Dry & calliper, air to oil control
Transmission Gears	F4/R4	Parking Brake	Drum type shoe brake, spring applied & oil released
Torque Converter Type	Single stage 3 elements	Steering System	
Make & Type	SEM TR200	Steering System	Flow amplifying
Forward I/Reverse I	km/h 7.8/7.8	Steering Pump Type	Gear pump
Forward II/Reverse II	km/h 15.7/15	System Pressure Setting	Mpa 16
Forward III/Reverse III	km/h 27.2/22	Steering Angle (LR)	° 38±1
Forward IV/Reverse IV	km/h 39.3/39	Tires	
ADR		Size	23.5-25
Main Drive Type	Spiral bevel gear, single stage	Blas	16
Final Drive Reduction Type	Planetary type, single stage	Layer	16
Rear - Oscillation +/-	° 14.11	Treated Type	LS/ES

Machine Dimensions



▶ Note: the above dimensions are based on the standard configuration.

Caterpillar (Guangzhou) Ltd. Address: No. 2999 Nanshan Road, Caterpillar Industrial Park, Guangzhou City, Guangdong Province, Zip Code: 265900, P.R.China
 © 2017 Caterpillar (Guangzhou) Ltd. All Rights Reserved. SEM Machinery, SEM, its logo, and other marks are used for concrete and related items in this brochure. All trademarks of Caterpillar (Guangzhou) Ltd. are used in this brochure.
 Version: February 2017 (A4) (A4)

SEM655D Wheel Loader



Insulated with Weichai Engine:
 It features excellent protection and high-quality equipment.

SEM655D

Product Advantage

- High Productivity
- Best-in-class Reliability and Durability
- Excellent Fuel Economy
- Outstanding Operator Comfort

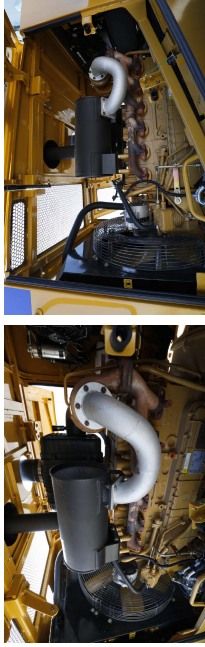
Website

<http://www.semmachinery.com>



Weichai Engine

- Low speed engine with E-ran provides increased operating efficiency
- Enhanced fuel pre-filter eliminates water and contaminant from fuel for best fuel system protection
- The air cleaner provides machine reliability even in the most severe applications



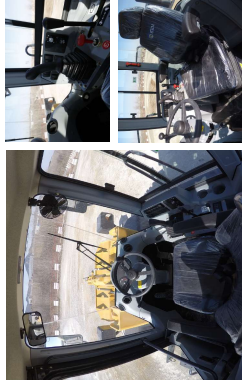
Efficient Hydraulic System

- Twin pump flow merging hydraulic system increases machine efficiency
- The optimized hydraulic system paired with the drive train reduces machine cycle time and increases productivity
- Joystick hydraulic control for easy and precise operation



Operator Station

- Premium operator station with big space and superior visibility
- Patented MAC mount provides less noise and increased comfort
- Adjustable suspension seat
- Sliding side window and AC with fresh air circulation provide operator comfort
- Single lever shifting is flexible and convenient
- Adjustable air flow outlet delivers better defrost performance



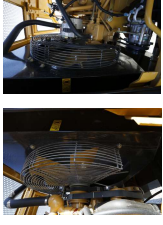
Reliable Drivetrain

- Countershaft transmission with upgraded core components provides high reliability
- Large rim-pull in 1st gear and higher speed in 2nd gear provide high efficiency for load and carry applications
- Clutch cutoff selection switch ensures stable and safe operation
- Torque converter structure is simple and efficiency is high
- The SEM designed and built axle provides best in class performance in heavy duty applications



Advanced Cooling System

- The standard cooling package provides high reliability in 50°C ambient conditions.
- Shock pad mounts ensure reliability under severe applications



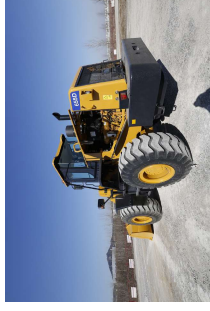
Solid Structure

- Structures undergo Finite Element Analysis (FEA) and On Machine Stress Analysis (OMSA) to ensure durability
- Performance Series (PS) buckets improve loading capability



Serviceability

- System pressure test ports are standard
- Big angle engine hood side open door provides easy service access
- Torque converter is isolated from transmission making it easy to service



Safety

- Safety design complies with all regulatory requirements
- Caterpillar Production System (CPS) leveraged in manufacturing process
- 3-point touching design provides convenient operator entering to cabin
- Backup alarm ensures machine safety
- Environmentally friendly painting process

